



**WTS - WTL Series WELL TANKS**  
 Designed and constructed per ASME Code Section VIII  
**SUBMITTAL DATA SHEET**

MODEL NUMBER	Capacity		B		A		NPT SYSTEM CONNECTION	APPR. WEIGHT	
	Gals	Liters	ins.	mm.	ins.	mm.		lbs.	Kg.
WTS-45	12.0	45	15.8	400	22.4	569	3/4"	52	23.6
WTS-80	21.0	80	15.8	400	34.9	886	1"	78	35.4
WTS-100	26.5	100	19.7	500	37.3	947	1"	83	37.6
WTS-140	37.0	140	19.7	500	43.3	1100	1 1/4"	114	51.7
WTL-170	44.0	170	19.7	500	48.7	1,237	1 1/4"	160	72.6
WTL-200	53.0	200	21.7	550	47.2	1,199	1 1/4"	170	77.1
WTL-300	80.0	300	25.6	650	49.0	1,245	1 1/4"	215	97.5
WTL-400	105.0	400	25.6	650	59.0	1,471	1 1/4"	248	112.5
WTL-450	120.0	450	25.6	750	69.1	1,417	1 1/4"	283	128.4
WTL-500	132.0	500	25.6	750	75.0	1,527	1 1/4"	341	154.7
WTL-600	160.0	600	25.6	650	85.0	2,256	2"	391	177.4
WTL-800	210.0	800	29.5	750	90.6	2,324	2"	531	240.9
WTL-1000	265.0	1,000	31.5	800	94.1	2,426	2"	561	254.5
WTL-1200	320.0	1,200	35.5	900	100.6	2,555	2"	960	435.4
WTL-1400	370.0	1,400	37.5	950	102.4	2,601	3"	1,040	471.7
WTL-1600	420.0	1,600	41.5	1,050	99.2	2,520	3"	1,183	536.6
WTL-2000	530.0	2,000	43.5	1,105	113.5	2,883	3"	1,318	597.8
WTL-3000	790.0	3,000	51.2	1,300	118.2	3,002	3"	1,865	845.9
WTL-4000	1,060.0	4,000	61.0	1,550	123.0	3,124	3"	2,616	1,186.6
WTL-5000	1,320.0	5,000	63.0	1,600	132.0	3,353	3"	2,892	1,311.8

SPECIFICATIONS
<b>Maximum working pressure</b> 150 PSI (10.5 kg/cm <sup>2</sup> )
<b>Maximum operating temp.</b> 240°F (115°C)
Tanks are built in accordance with ASME Section VIII, Division I. 8 thru 1000 liter units are NSF61 approved. Larger units contains FDA approved compound bladders and is suitable for domestic potable water applications. Seamless one piece bladder for longer life. Bladder is completely replaceable. Acceptance volume is 90% of stated tank capacity. Epoxy gray finish exterior. Pressure gauge is included on 80 liter units and larger.
<b>Factory precharge</b> 40 psig (2.75 kgf/cm <sup>2</sup> )
<b>System connection: Epoxy coated system connection</b> All Units Are Bottom Connections
LARGER CONNECTION AVAILABLE +

+ CONTACT FACTORY

\* IN-LINE MODELS DO NOT HAVE BASE SUPPORTS

ALL UNITS ARE SUITABLE FOR HORIZONTAL INSTALLATIONS

FUSED SIGHT INDICATOR INSTALLED ON 21 GALLON & LARGER TANKS

Job Name
Location
Engineer
Contractor
Contractor P.O. Number

Sales representative		
Model number ordered	Qty:	
System operating temperature	Min.	max.
Date submitted		



Dimensional data and weights are approximate Rev. 52025

HTS

DTS

WTS

SERIES

DIAMETER - B



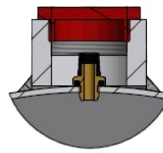
IN-LINE NO BASE

DIAMETER - B

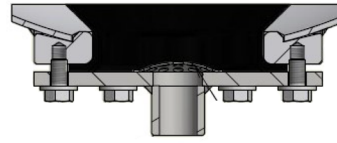


BASE SUPPORT

CAP



AIR CHARGING VALVE



NPT SYSTEM CONNECTION

8-45 LITER CAPACITY

OVERALL HEIGHT A

HTS / HTL

WTS / WTL

DTS / DTL

SERIES

DIAMETER - B

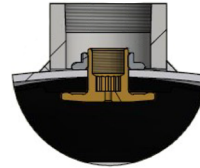


SKIRT SUPPORT

DIAMETER - B



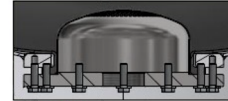
BLADDER SUPPORT BULKHEAD ASSEMBLY



TANK TOP SIDE

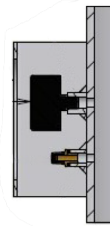


BOTTOM COVER PLATE FEMALE NPT SYSTEM CONNECTION



PRESSURE GAUGE

AIR CHARGING VALVE



21-2000 LITER CAPACITY

OVERALL HEIGHT A

HTL

WTL

DTL

SERIES

DIAMETER - B

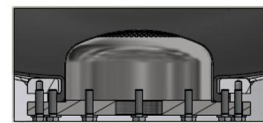
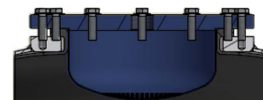


SKIRT SUPPORT

DIAMETER - B



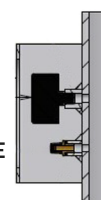
TOP DOME COVER PLATE



BOTTOM DOME COVER PLATE FEMALE SYSTEM CONNECTION

PRESSURE GAUGE

AIR CHARGING VALVE



3000-5000 LITER CAPACITY

OVERALL HEIGHT A