



# DTS - DTL Series THERMAL EXPANSION TANKS

Designed and constructed per ASME Code Section VIII  
SUBMITTAL DATA SHEET

MODEL NUMBER	Capacity		B		A		NPT SYSTEM CONNECTION	APPR. WEIGHT	
	Gals	Liters	ins.	mm.	ins.	mm.		lbs.	Kg.
DTS-8*	2.0	8	10.6	270	10.2	259	1"	21	9.5
DTS-19*	5.0	19	10.6	270	19.3	490	1"	32	14.5
DTS-30*	8.0	30	15.8	400	15.3	389	1"	41	18.6
DTS-45	12.0	45	15.8	400	22.4	569	1"	52	23.6
DTS-80	21.0	80	15.8	400	34.9	886	1"	78	35.4
DTS-100	26.5	100	19.7	500	37.3	947	1"	83	37.6
DTS-140	37.0	140	19.7	500	43.3	1100	1 1/4"	114	51.7
DTL-170	44.0	170	19.7	500	48.7	1,237	1 1/4"	160	72.6
DTL-200	53.0	200	21.7	550	47.2	1,199	1 1/4"	170	77.1
DTL-300	80.0	300	25.6	650	49.0	1,245	1 1/4"	215	97.5
DTL-400	105.0	400	25.6	650	59.0	1,471	1 1/4"	248	112.5
DTL-450	120.0	450	25.6	750	69.1	1,417	1 1/4"	283	128.4
DTL-500	132.0	500	25.6	750	75.0	1,527	1 1/4"	341	154.7
DTL-600	160.0	600	35.5	650	85.0	2,256	2"	391	177.4
DTL-800	210.0	800	29.5	750	90.6	2,324	2"	531	240.9
DTL-1000	265.0	1,000	31.5	800	94.1	2,426	2"	561	254.5
DTL-1200	320.0	1,200	35.5	900	100.6	2,555	2"	960	435.4
DTL-1400	370.0	1,400	37.5	950	102.4	2,601	3"	1,040	471.7
DTL-1600	420.0	1,600	41.5	1,050	99.2	2,520	3"	1,183	536.6
DTL-2000	530.0	2,000	43.5	1,105	113.5	2,883	3"	1,318	597.8
DTL-3000	790.0	3,000	51.2	1,300	118.2	3,002	3"	1,865	845.9
DTL-4000	1,060.0	4,000	61.0	1,550	123.0	3,124	3"	2,616	1,186.6
DTL-5000	1,320.0	5,000	63.0	1,600	132.0	3,353	3"	2,892	1,311.8

<b>SPECIFICATIONS</b>
Maximum working pressure 150 PSI (10.5 kg/cm <sup>2</sup> )
Maximum operating temp. 240°F (115°C)

-Tanks are built in accordance with ASME Section 8 Div. 1.  
 -8 liters thru 1000 liters are NSF61  
 -Larger units contains FDA approved compound bladders and is suitable for domestic potable water applications.  
 -Seamless one piece bladder for longer life.  
 -Bladder is completely replaceable.  
 -Epoxy gray finish exterior.  
 -Pressure gauge is included on 80 liter & larger tanks.

**NOTE: DTS/DTL Tanks must be installed on the cold water supply side.**

<b>Factory precharge</b>
DTS Series: 40 psig (2.81 kg/cm <sup>2</sup> )
DTL Series: 55 psig (3.87 kg/cm <sup>2</sup> )

<b>System connection: Epoxy coated system connection</b>
All Units Are Bottom Connections
<b>LARGER CONNECTION AVAILABLE+</b>

+ CONTACT FACTORY

\* IN-LINE MODELS DO NOT HAVE BASE SUPPORTS  
 ALL UNITS ARE SUITABLE FOR HORIZONTAL INSTALLATIONS  
 FUSED SIGHT INDICATOR INSTALLED ON 21 GALLON & LARGER TANKS

Job Name
Location
Engineer
Contractor
Contractor P.O. Number

Sales representative		
Model number ordered	Qty:	
System operating temperature	Min.	max.
Date submitted		



Dimensional data and weights are approximate  
 Rev. 52025

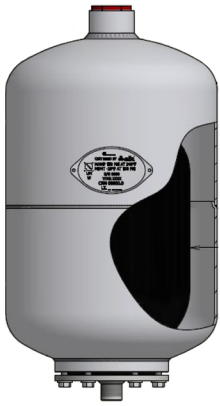
HTS

DTS

WTS

SERIES

DIAMETER - B



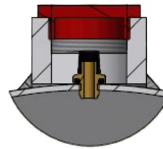
IN-LINE NO BASE

DIAMETER - B

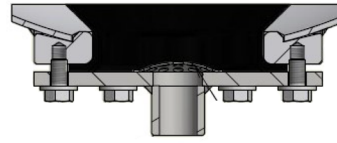


BASE SUPPORT

CAP



AIR CHARGING VALVE



NPT SYSTEM CONNECTION

8-45 LITER CAPACITY

OVERALL HEIGHT A

HTS / HTL

WTS / WTL

DTS / DTL

SERIES

DIAMETER - B

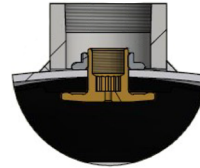


SKIRT SUPPORT

DIAMETER - B



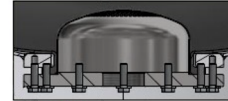
BLADDER SUPPORT BULKHEAD ASSEMBLY



TANK TOP SIDE

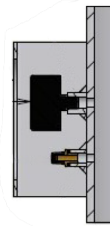


BOTTOM COVER PLATE FEMALE NPT SYSTEM CONNECTION



PRESSURE GAUGE

AIR CHARGING VALVE



21-2000 LITER CAPACITY

OVERALL HEIGHT A

HTL

WTL

DTL

SERIES

DIAMETER - B

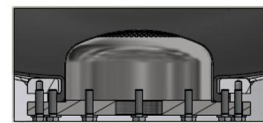
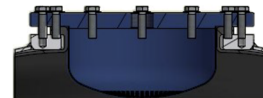


SKIRT SUPPORT

DIAMETER - B



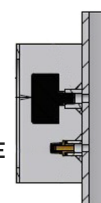
TOP DOME COVER PLATE



BOTTOM DOME COVER PLATE FEMALE SYSTEM CONNECTION

PRESSURE GAUGE

AIR CHARGING VALVE



3000-5000 LITER CAPACITY

OVERALL HEIGHT A