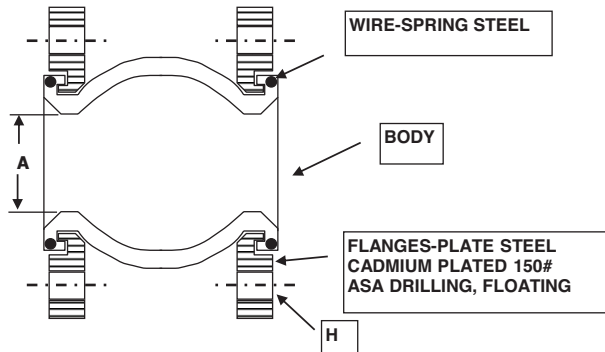




SINGLE SPHERE RUBBER EXPANSION JOINT



CONTROL UNITS/ UNANCHORED SYSTEMS
 *CONTROL UNITS MUST BE INSTALLED WHEN PRESSURES EXCEED RATING BELOW. (DESIGN-OPERATING-TEST OR SURGE)

PIPE SIZE	MSS P.S.I.G.
1"- 4"	180
5"- 10"	135
12"-14"	90
16"-24"	45

BODY CONSTRUCTION:	MAXIMUM TEMPERATURE
NEOPRENE NYLON	<input type="checkbox"/> 230 DEGREES F.
EPDM NYLON	<input type="checkbox"/> 250 DEGREES F
BUTYL NYLON	<input type="checkbox"/> 250 DEGREES F
NITRILE NYLON	<input type="checkbox"/> 230 DEGREES F.

MODEL NUMBER	A NOMINAL SIZE	FACE TO FACE	EST. WEIGHT (LB.)	H NO. OF HOLES	SIZE	LATERAL DEFLECT	AXIAL EXT.	AXIAL COMP.	ANGULAR	WRK. PRESS
EMSEJ-015	1-1/2"	6"	7	4	1/2"	(+/- 1/2")	3/8"	1/2"	27	225
EMSEJ-020	2"	6"	9	4	5/8"	(+/- 1/2")	3/8"	1/2"	20	225
EMSEJ-025	2-1/2"	6"	13	4	5/8"	(+/- 1/2")	3/8"	1/2"	17	225
EMSEJ-030	3"	6"	14	4	5/8"	(+/- 1/2")	3/8"	1/2"	14	225
EMSEJ-040	4"	6"	19	8	5/8"	(+/- 1/2")	1/2"	3/4"	14	225
EMSEJ-050	5"	6"	23	8	3/4"	(+/- 1/2")	1/2"	3/4"	11	225
EMSEJ-060	6"	6"	27	8	3/4"	(+/- 1/2")	1/2"	3/4"	9	225
EMSEJ-080	8"	6"	41	8	3/4"	(+/- 1/2")	1/2"	3/4"	7	225
EMSEJ-100	10"	8"	57	12	7/8"	(+/- 3/4")	3/4"	1"	7	225
EMSEJ-120	12"	8"	83	12	7/8"	(+/- 3/4")	3/4"	1"	6	225
EMSEJ-140	14"	8"	115	12	1"	(+/- 3/4")	3/4"	1"	5	150
EMSEJ-160	16"	8"	165	16	1"	(+/- 3/4")	3/4"	1"	4	125
EMSEJ-180	18"	8"	168	16	1-1/8"	(+/- 3/4")	3/4"	1"	4	125
EMSEJ-200	20"	8"	170	20	1-1/8"	(+/- 3/4")	3/4"	1"	3	125
EMSEJ-240	24"	10"	255	20	1-1/4"	(+/- 3/4")	3/4"	1"	3	110

CUSTOMER:		DESIGN DATA: 1) MAX NEGATIVE PRESSURE. 26" HG VACUUM 2) TEMPERATURE RANGE: 20F-300F 3) LISTED MOVEMENTS CANNOT OCCUR SIMULTANEOUSLY
PROJECT:		
ENGINEER:		
PO#:		