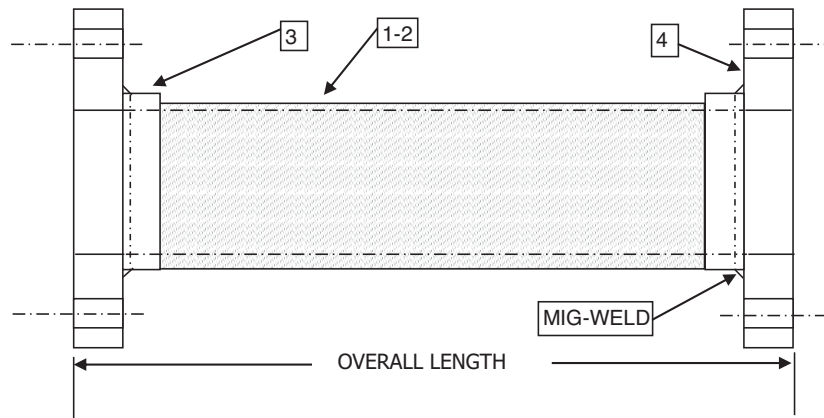




FLANGED FLEX CONNECTORS



MATERIALS:

#1-2 HOSE: STAINLESS STEEL HOSE WITH 1 LAYER OF STAINLESS BRAID

#3 BRAID COLLAR: T-304 STAINLESS STEEL

#4 FLANGES: CARBON STEEL PLATE FLANGES 150# DRILL

| MODEL NUMBER | EST. WEIGHT | SIZE | OVERALL LENGTH | MAX O.D. | WRK. PSIG | @ TEMP | MAX TEST | LATERAL OFFSET |
|--------------------|-------------|------|----------------|----------|-----------|--------|----------|----------------|
| EFC-15-FLG | 7 | 1.5" | 9" | 5.5" | 410 | 70° F | 615 | 1/16" |
| EFC-20-FLG | 9 | 2" | 9" | 6" | 450 | 70° F | 675 | 1/16" |
| EFC-25-FLG | 12 | 2.5" | 9" | 7" | 570 | 70° F | 855 | 1/16" |
| EFC-30-FLG | 13 | 3" | 9" | 7.5" | 450 | 70° F | 675 | 1/16" |
| EFC-40-FLG | 18 | 4" | 9" | 9" | 285 | 70° F | 428 | 1/16" |
| EFC-50-FLG | 25 | 5" | 11" | 10" | 210 | 70° F | 315 | 1/16" |
| EFC-60-FLG | 28 | 6" | 11" | 11" | 240 | 70° F | 360 | 1/16" |
| EFC-80-FLG | 52 | 8" | 12" | 13.5" | 217 | 70° F | 326 | 1/16" |
| EFC-100-FLG | 65 | 10" | 13" | 16" | 165 | 70° F | 248 | 1/16" |
| EFC-120-FLG | 105 | 12" | 14" | 19" | 155 | 70° F | 233 | 1/16" |
| EFC-140-FLG | 115 | 14" | 14" | 21" | 125 | 70° F | 188 | 1/16" |
| EFC-160-FLG | 235 | 16" | 14" | 23.5" | 110 | 70° F | 165 | 1/16" |

TEMPERATURE DERATING FACTORS: MULTIPLY X WRK. PSIG

| | | | | | | | |
|--------|--------|--------|--------|--------|--------|--------|--------|
| 200° F | 250° F | 300° F | 350° F | 400° F | 500° F | 600° F | 700° F |
| 0.94 | 0.92 | 0.88 | 0.86 | 0.83 | 0.78 | 0.74 | 0.7 |

| | |
|-----------|--|
| CUSTOMER: | |
| PROJECT: | |
| ENGINEER: | |
| PO#: | |